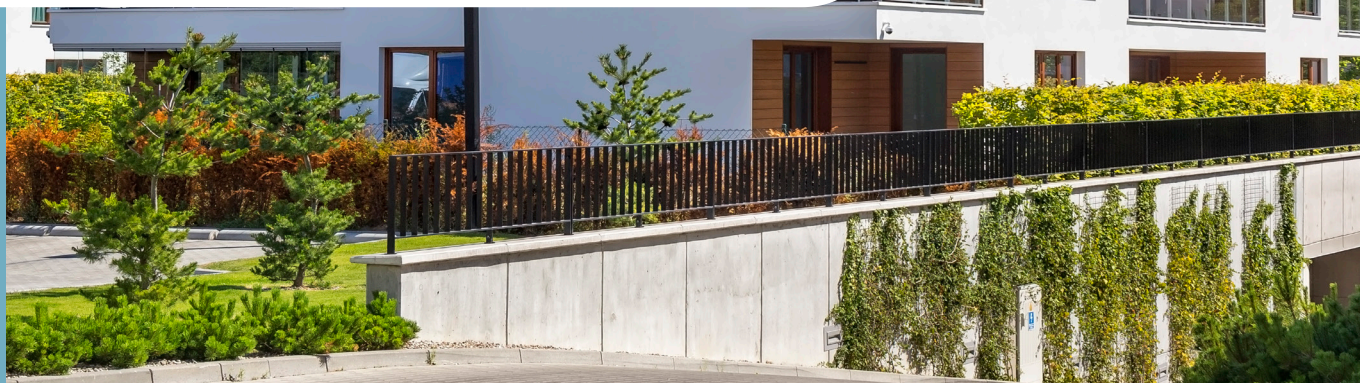


SERVING THE HOUSING SECTOR



OPERATING AND OPTIMISING YOUR BUILDINGS' TECHNICAL INSTALLATIONS ROUND THE CLOCK



Housing sector actors: social housing landlords, multi-occupier buildings, investors and others.

We work with you to ensure the long-term value and enhancement of your assets.

Because you need to:

- Guarantee that your installations meet the latest standards
- Ensure wellbeing and quality service to your occupants
- Optimise long-term costs
- Meet the environmental challenge
- Update your buildings and housing units



**VINCI Facilities takes care of your buildings
and their occupants through tailored solutions.**

- Operation and maintenance of your installations
- Modernisation and enhancement of your property assets
- Constant care for the comfort and wellbeing of occupants
- Energy performance
- Safety and regulatory advice
- Financial engineering and consultancy
- Residential concierge services

OPERATION AND MAINTENANCE OF YOUR INSTALLATIONS

- Passenger lifts
- Roofing and weathertightness (weathertightness inspections, repairs, renovations, etc.)
- High- and low-voltage electrical work
- Plumbing systems and fittings
- All trades

MODERNISATION AND ENHANCEMENT OF YOUR PROPERTY ASSETS

- Major renovations, refits, rehabilitation and modernisation
- Multi-year investment plans

CONSTANT CARE FOR THE COMFORT AND WELLBEING OF OCCUPANTS

- Disabled accessibility
- Heating, ventilation, air conditioning
- Lighting

ENERGY PERFORMANCE

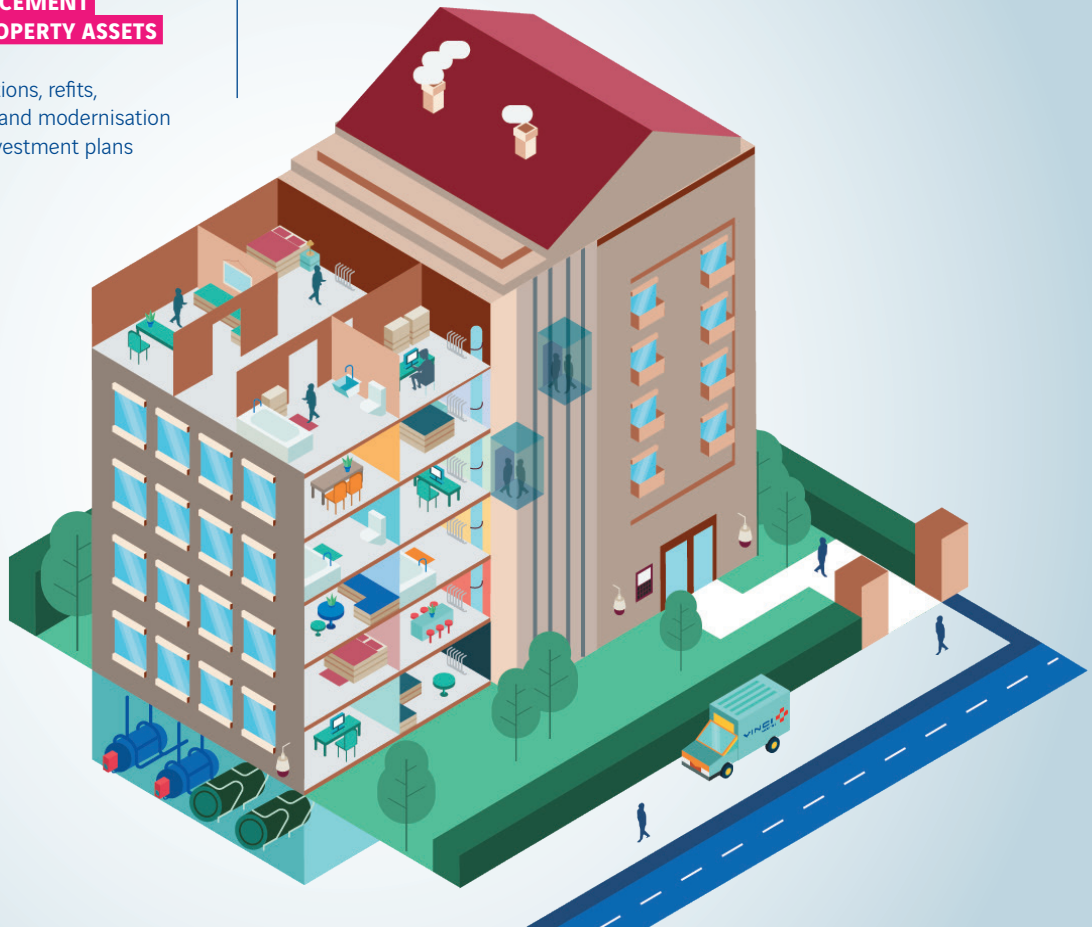
- Energy performance contract
- Energy management and supply

SAFETY AND REGULATORY ADVICE

- Fire prevention and detection
- Interphone systems
- Regulatory watch and inspections
- Video surveillance

OCCUPANT SERVICES

- Residential concierge services



BACKED BY OUR EXPERIENCE AND AGILE ORGANISATION, WE CAN PROVIDE YOU WITH PRECISELY THE SERVICES AND SUPPORT YOU REQUIRE

- Local, dedicated and qualified teams
- Services available 24/7
- Operational and statutory reporting
- Web portal offering full transparency and traceability

